

TuffWrap EXT

TuffWrap® EXT temporary exterior walls resilient design and installation process ensure strongholds during unexpected conditions. **Keep your projects on schedule and protected from foul weather – without the need for scaffolding.**



FLAME RESISTANT

TuffWrap EXT's innovative composition is designed to reduce flame and smoke spread for temporary exterior walls.



PROTECT WORK CREWS

Protect work crews with a safe interior work environment against the harsh elements of weather with our weather-resistant enclosure.



INNOVATIVE SCRIM DESIGN

If an accidental puncture occurs, the diagonal and perpendicular scrim orientation resists tearing and continues to provide protection.



UV RESISTANT

Protects against degradation caused by the absorption of UV radiation.



CUSTOM ENGINEERING

Covering large openings and spans, we can tailor an enclosure to your requirements for an engineered protection solution.



EXTEND WORK SEASON

Save time and money by reducing downtime between the phases of construction and eliminate weather interruptions.



STRONG 7-PLY MATERIAL

The seven-layer polyethylene material is designed to provide puncture resistance and higher tear strength for an exterior wall.



800.995.4556 | tuffwrap.com

*View TuffWrap EXT specifications on the reverse side.
TuffWrap® is a registered trademark of TuffWrap Installations, Inc.

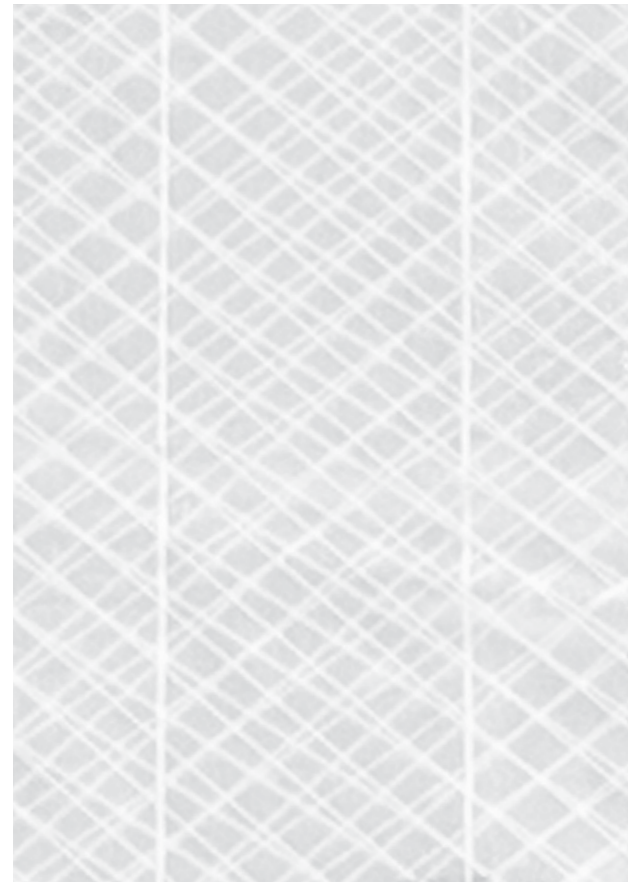


TuffWrap EXT

Properties	Specifications
Appearance	Translucent
Thickness, Nominal	10 mil
Construction	7-ply material, double scrim reinforced polyethylene
Scrim	1000 denier - diagonal & vertical overlapping pattern
Weight	Approximately 0.0475 lbs. / sq. ft.
Flame Resistant	Yes
UV Resistant	Yes
Weather Resistant	Yes
Tear Resistant	Yes
Flexible	Yes
Maximum Static Use Temperature	180° F
Minimum Static Use Temperature	-70° F
Wind Load	Up to occasional 45 mph gusts

Installation	
Attachment	Full perimeter
Attachment Type (A)	Bar Joists
Attachment Type (B)	Concrete
Attachment Type (C)	W Beam
<30' Wall Height	Reinforcement straps optional*
>30' Wall Height	Reinforcement straps included**

* Every project is tailored to our clients' specific needs. Certain projects may require straps.
 ** Based on building structure



The diagonal scrim functions as the rip stop, while it evenly distributes point loads across the material.

The linear scrim holds installation tension by transferring the load to anchor points on the building.



800.995.4556 | tuffwrap.com

TuffWrap is a registered trademark of TuffWrap Installations, Inc. (EX21B)

